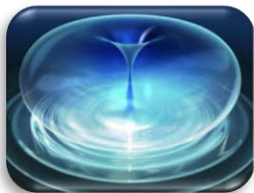


Description

In the great development of modern high technology, high power / high power / ultra high power RF technology has become the basic support technology of semiconductor / medical / national defense. GC TECH focusing on coaxial connectors for more than ten years, We developed many types high power connectors. We provide connect solution include cable connector and receptacle and cable assembly services and adaptor.

Application

- Semi-Conductor Manufacturing Equipment
- Flat Panel Manufacturing Equipment
- Solar Panel Manufacturing Equipment
- High Power Lasers
- Medical
- High Power Radars
- TV/FM Broadcast
- Magnetic Resonance Imaging
- Other High Power RF Applications
- High-Power Microwave Weapon, HPM



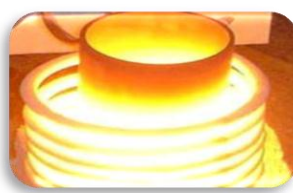
Ultrasonic Cleaning



Medical Plasma



Plasma Etching



Induction Heating



Impedance Matching Network



Ultrasound Test-Pulser/Receiver



Plasma discharge



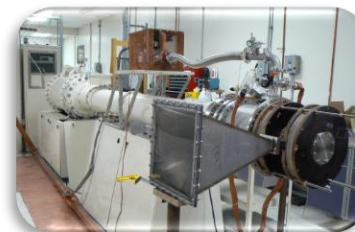
RIE , Reactive Ion Etch



PECVD , Plasma Enhanced



High Power Radars



High-Power Microwave Weapon

Feature & Benefit

- High power to upon 20KW
- Frequency Range DC-1GHz
- High temperature to 165°C;
- Long distance transmission over 100meters;

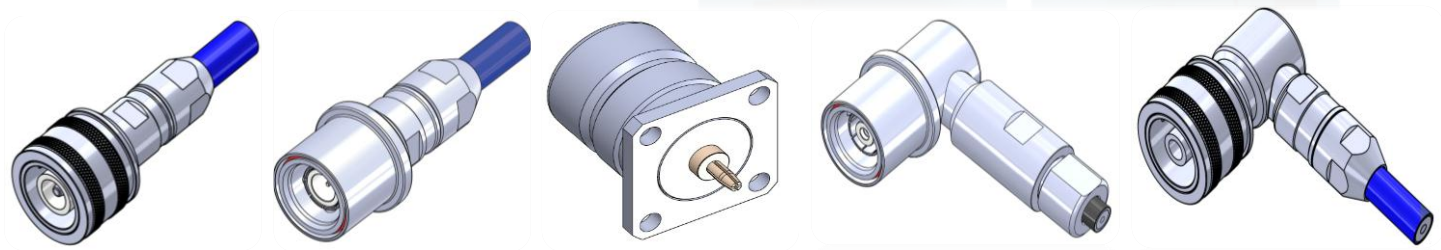
Commonly available connectors

- C/SC
- N
- HN
- 7/16
- LC
- 7/8" EIA
- 1-5/8" EIA



Quick Disconnect Connector

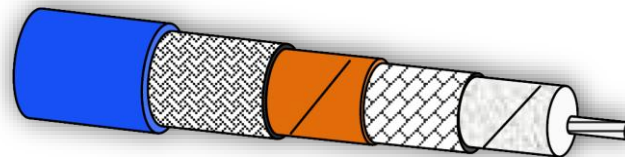
- QDS
- SQS
- QRM



Cable



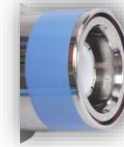
➤ RG-393



➤ SFT-500/600

Frequency (MHz)	RG-393		SFT-500		SFT-600	
	OD \varnothing 9.91mm		\varnothing 12.5mm		\varnothing 15mm	
	Power (KW)	Attenuation (dB/100m)	Power (KW)	Attenuation (dB/100m)	Power (KW)	Attenuation (dB/100m)
13.56	12.6	2.36	18.1	1.31	25.87	1.2
1000	1.2	23.75	1.9	11.7	2.89	10.8
1500	0.97	30.18	1.56	14.5	2.34	13.4

Cable Assembly



Rf Generator Connection Solution